

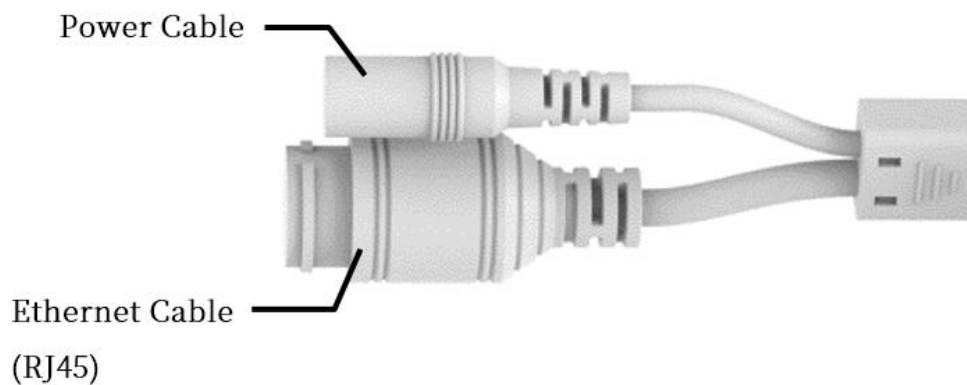
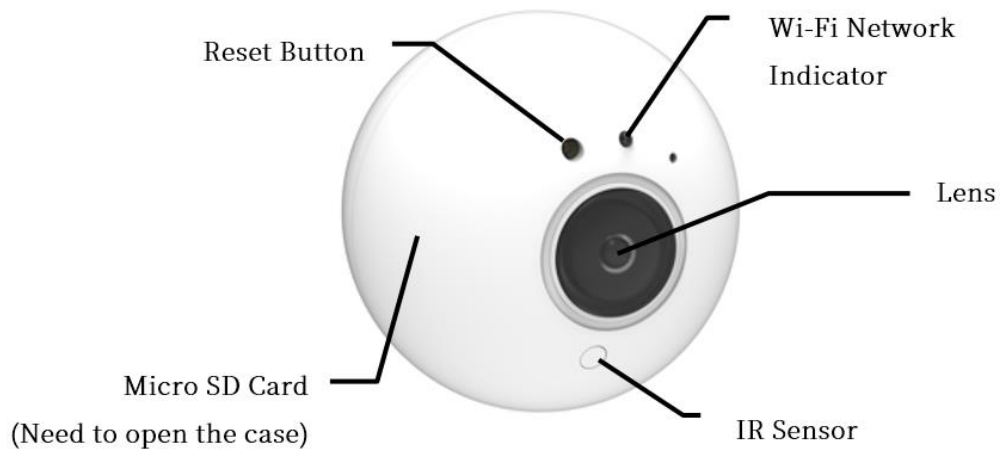


# **Wi-Fi 1080P FHD H.264 IP Camera Quick Guide**

# 1. Package Content

Camera / AC Power Adaptor & Cable / Mounting Bracket and Screws / Guide Guide

## 2. Name of Each Part



Ethernet



Power Jack

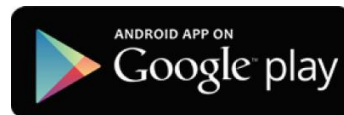
## 3. Network Requirement

- A. An ADSL modem with internet connection
- B. A broadband router with Wi-Fi capability. Ensure DHCP on router being enable.
- C. Android or iOS Smart Phone with network connection.

## 4. Installation

### A. APP Installation

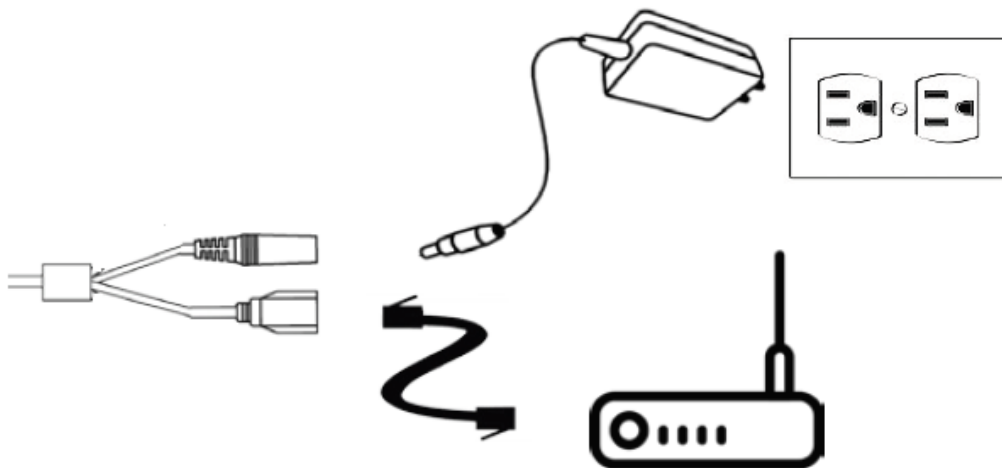
Step 1. Install “Home Mate 2” APP.



### B. Wired Setup

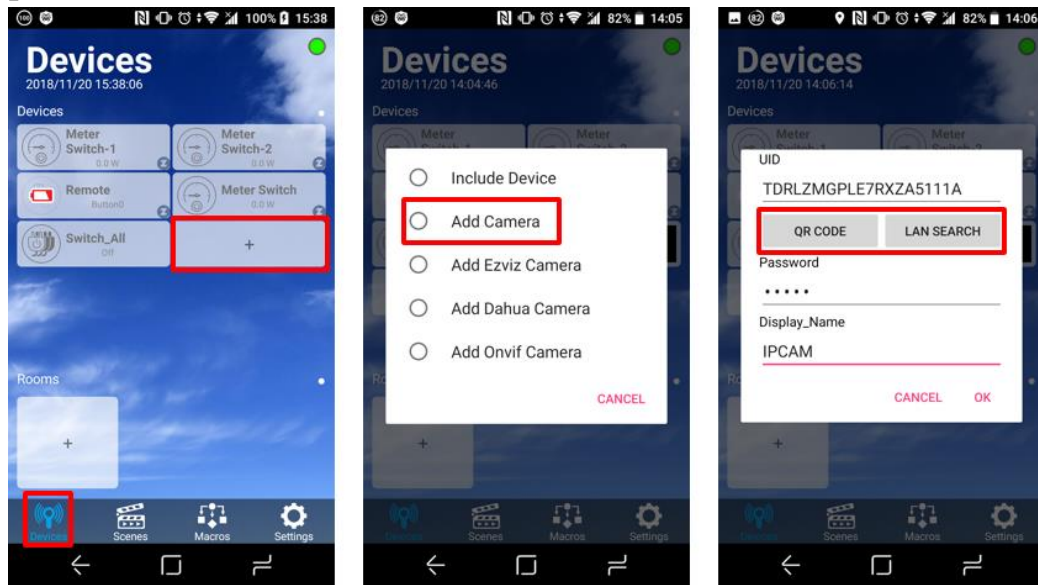
Step 1. Connect Ethernet cable between IP camera and your router.

Step 2. Attach the power adaptor to the camera connector and plug to a power outlet.



Step 3. Launch APP to add IPCAM

Step 4. Go to “Devices” page and click add device icon. Select “Add Camera” then scan QR code or LAN search to fill in UID. Key-in password and display name then press “OK” . Default password is “admin” .



\*If the password is not correct, camera video stream will not send to mobile device. Due to no error password message, user need to confirm the password is correct.

### C. Camera Function

Gateway APP only provide basic camera function.

- a) Set Video Quality
- b) Change Password
- c) Video Recording
- d) Snapshot
- e) Re-connect

\*Video Recording and Snapshot files will be saved to phone storage space.