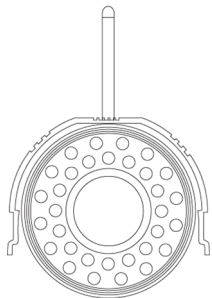


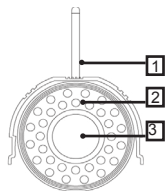
Wi-Fi 720P HD Day & Night Plug & Play Camera Quick Guide



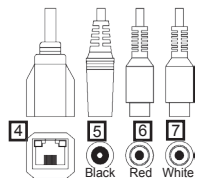
1. Package Content

Camera / AC Power Adapter /
Mounting Bracket and Screws / Guide Guide

2. Name of Each Part



1. WiFi
2. IR LED (night vision function)
3. Lens



4. Ethernet
5. Power Jack
6. Audio In
7. Audio Out

3. Network Requirements

- An ADSL modem with internet connection.
- A broadband router with Wi-Fi capability. Please make sure DHCP on router is enabled.
- Android or iOS Smart Phone; 3G/Wifi network connection preferred.

4. Installation

Step 1. Install "P2P IPCamera" APP.



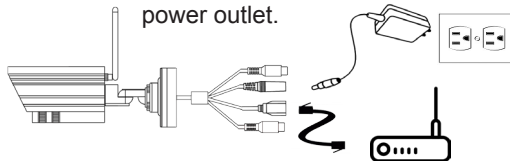
P2P IPCamera



A. Wired Setup

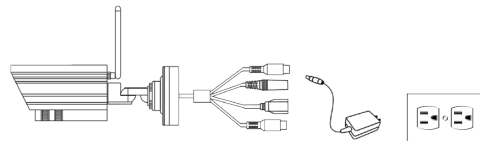
Step 1. Connect ethernet cable between IP camera and your router.

Step 2. Attach the power adapter to the camera connector and plug to a power outlet.



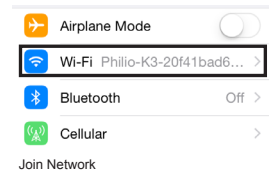
B. Wireless Setup

Step 1. Connect micro USB to IP camera and plug to socket to power the IP camera.



Step 2. Wait for one minute for IP Camera to start up.

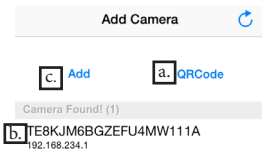
Step 3. On your wireless connection, find SSID of Camera: "Philio-K3-xxxx". Join into the network.



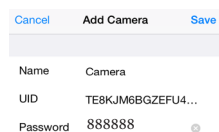
Step 2. Open APP “P2P IP Camera” on your smartphone.

Step 3. Add the IP Camera to APP, you can either

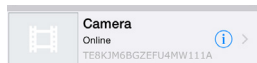
- Scan the QR Code.
- Wait for APP to find the camera.
- Enter UID manually.



Step 4. Enter Password (Default 888888) then press Save.

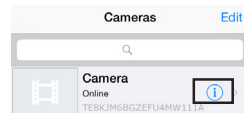


Step 5. Once the status of camera is online, you can click and watch the live video right away.

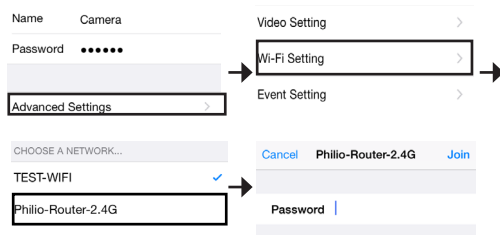


5. Set to Wireless Mode

Step 1. Click on the “i” for the settings.



Step 2. Select Advance Settings. Select Wi-Fi Setting. Select the preferred Wi-Fi and enter password then press Join.



Step 3. It will load for a minute. When successful, the preferred Wifi network is selected. When return to camera list, camera status is still online.

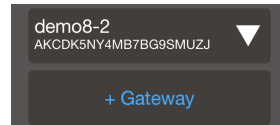


6. Add IP Camera into the Gateway

Step 1. Open APP “Z-wave Home HD” on mobile device.

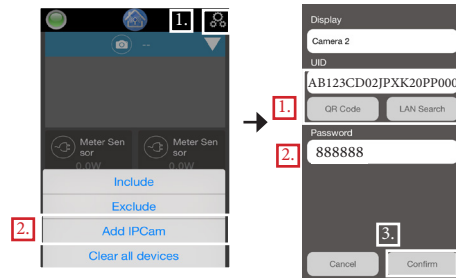


Step 2. Enter the preferred gateway.



Step 3. Add IP Camera

For Tablet: “+” and “Add IPCam”
For Phone: Setting Icon and “Add IPCam”

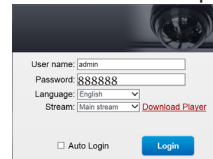


Step 4. Follow **Steps 6-7 on Installation.** (see previous page for illustration)

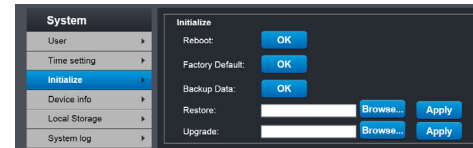
Step 5. Once successful you can see the video on the top of sensors (phone) or on the upper left side (pad).

7. Frequently Asked:

- How to do reset?
 - Open Internet Explorer and access IP Camera's IP Address. IP Address depends on router's DHCP.



Go to Systems→Initialized→Factory Default



- Where can I set motion recording ?
 - you can do motion recording settings on “P2P IP Camera” APP.